

TUNER

Single Channel, Power Monitor with Tuning Needle



KEY FEATURES

1. **ULTRA-FAST NEEDLE**
Less than 1 second response time
2. **READS ALL POWER DETECTORS**
Thermopiles and photo detectors of the PH100 and PH20 Series
3. **LARGE LCD DISPLAY**
 - 77 x 58 mm
 - 17.5 mm digits
 - Backlight (with AC adaptor)
4. **3 DISPLAY FUNCTIONS FOR THE NEEDLE**
 - Normal
 - Tail Mode (indicates speed)
 - Bar graph

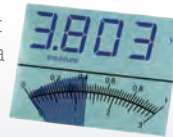
Also HIGH and LOW values hold
5. **SINGLE-BUTTON NAVIGATION**
Direct access and long press access to the main functions
6. **LOW CONSUMPTION**
Lasts 300 hours with 4 AA alkaline batteries

DISPLAY MODES

TAIL :
Follows the speed of the power change. The comet tail is longer for faster reading changes and shorter for slower reading changes.



BAR GRAPH :
Fills the needle display up to the real time value (best mode when viewing from a distance).



HIGH/LOW :
When activated, indicates the highest and lowest powers since activation. The high and low needles blink to help distinguish them from the real time value.



ACCESSORIES



Additional 9V Power Supply
(Model Number: 200960)



Wall Support
(Model Number: 201241)



Protective Pouch
(Model Number: 200128)



Pelican Carrying Case

SEE ALSO

POWER DETECTORS	58
HIGH POWER DETECTORS	92
PH SERIES PHOTO DETECTORS	108
THZ DETECTORS	114
OEM DETECTORS	130
LIST OF ALL ACCESSORIES	190

TUNER

SPECIFICATIONS



*Also traceable to NRC-CNRC

TUNER	
DETECTOR TYPES	Thermopiles, Photo Detectors (PH Series)
DISPLAY	LCD with Tuning Needle and Backlight
POWER METER SPECIFICATIONS	
Power Range	10 pW to 10 kW
Digital Resolution	
PH Series	10 pW
XLP Series	1 μ W
UP Series	1 mW
HP Series	100 mW (HP60A), 1 W (HP100A)
Monitor Accuracy	± 1 %, full scale
Statistics	Min, Max
DETECTOR COMPATIBILITY	
Thermopiles	Average Power (W, dBm)
Photo Detectors (PH Series)	Average Power (W, dBm)
GENERAL SPECIFICATIONS	
Digital Display Size	77 x 58 mm LCD
Needle Display	Ultrafast Tuning Needle
Needle Accuracy	0.9 %
Refresh Rate	4 Hz
Analog Output	0-1 Volt, Full Scale, ± 1 %
Dimensions (Without Stand)	210W x 122H x 44D mm
Weight (With Batteries)	0.47 kg
Battery Type	4 x AA Alkaline
Battery Life (Estimated)	300 hours with detector
External Power Supply	100/240 VAC 50-60 Hz to 9 VDC 1.66 A
ORDERING INFORMATION	
Product Name	TUNER
Product Number	201207

Specifications are subject to change without notice