

Basler Camera Software Suite

ONE FOR ALL



A pylon4



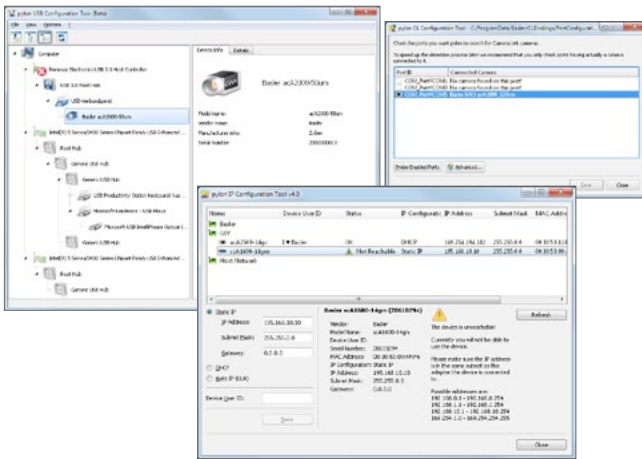
- One software package for all camera interfaces
- Easy-to-use tools for camera configuration and for capturing images
- GenICam technology provides flexible support for new camera features
- User-optimized SDK you can build your solutions on
- Windows and Linux support

OVERVIEW

Basler pylon 4 Camera Software Suite

The pylon Camera Software Suite is a collection of drivers and tools for operating any Basler camera with a Windows or Linux PC. As it is based on GenICam technology, it offers barrier-free access to the newest camera models and the latest features. Changes to an existing camera device in your application essentially becomes a plug-and-play process.

An easy-to-use set of **configuration tools** allows the configuration of the camera's interface:

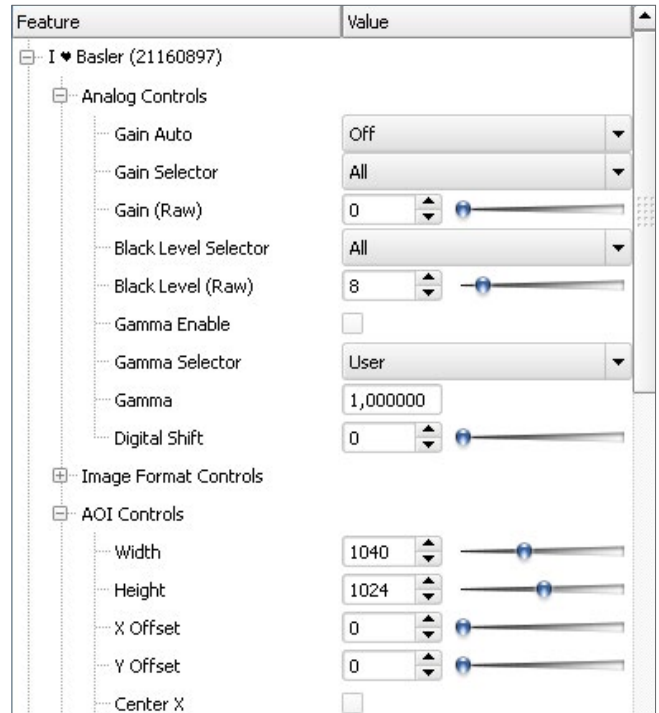


For example, you can easily configure the IP settings of a GigE Vision camera, fix driver or bandwidth problems for USB cameras, or configure baud rates for Camera Link cameras.

The **pylon Viewer** provides a versatile application for testing and evaluating Basler cameras.



The tree structure of the viewer's graphical user interface lets you easily find the best camera parameter setup, adjust image quality, and control advanced camera features.



The pylon **USB3 Vision Driver** fully supports the USB3 Vision standard. It allows Basler USB 3.0 cameras to use the full speed and bandwidth of USB 3.0 for image transmission, while reducing resource load and using off-the-shelf hardware components.

The pylon **GigE Vision Performance Driver** quickly separates incoming packets carrying image data from other traffic on the network, and makes the data available for use by your vision application while requiring the lowest CPU resources. This driver can only be used with network cards that include specific Intel chipsets. The pylon **GigE Vision Filter Driver** supports all kinds of hardware, common GigE network cards, and GigE ports on your motherboard as well.

The pylon **IEEE 1394 Driver** gives you access to a well-established interface technology, and the pylon **Camera Link Configuration Driver** offers easy access to all camera parameters of Basler's latest Camera Link families: ace, aviator, and racer.

Get your free version:
www.baslerweb.com/pylon

Software Development Kit

The pylon Camera Software Suite also contains a **powerful SDK** and helps to develop any kind of camera application for Windows or Linux.

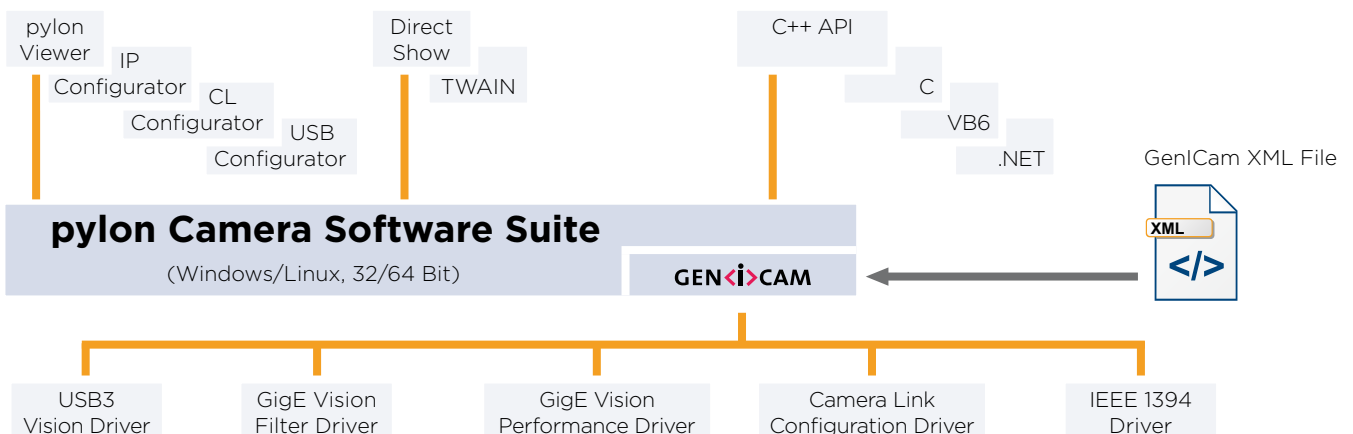
With the well-designed and user-friendly API you will need just a few lines of code to configure the camera and to grab and display images. Comprehensive documentation, plus a collection of programming samples for C++, C#, .NET languages (C#, VB.NET, etc.), and VB6 illustrate various use cases for different grab strategies, multi-camera applications, recording video files, and many more.

Basler also offers „pylon redistributables“ including the pylon runtime environment and separate drivers for USB3.0, GigE, IEEE 1394, or all of them. This helps you to deploy your pylon-based application to the end user.

The pylon Camera Software Suite contains the following main modules. Each one can be individually selected/unselected during the installation process, preventing the installation of unneeded modules on your system:

- USB3 Vision Driver
- GigE Vision Filter Driver
- GigE Vision Performance Driver

The pylon Camera Software Suite operates with all Basler line scan and area scan cameras – no matter what interface they use. It offers stable, reliable and flexible data exchange between Basler cameras and PCs, at a very low CPU load.



- IEEE 1394 Driver
- Camera Link Serial Communication Driver
- pylon Viewer
- Configuration tools for GigE Vision, USB3 Vision and Camera Link
- pylon DirectShow adapter
- pylon Twain adapter
- pylon SDK for all cameras: C, C++, .NET (C#, VB.NET, etc.), and VB6 (the 'pylon for Linux' version only supports the GigE interface via a C++ API)

Supported platforms:

- Windows XP SP3, Windows 7, Windows 8, 32 or 64 bit
- Linux (for GigE Vision), Kernel 2.6, 32 or 64 Bit
- 150 MB of free disk space and 50 MB RAM per camera required

The pylon Camera Software Suite can be downloaded for free at www.baslerweb.com/pylon.

For more information on the installation process, refer to the pylon Installation Guide. The helpful pylon Release Notes contain all improvements and bug fixes since the first pylon version.

OTHER INFORMATION

About Basler

Founded in 1988, Basler is a leading global manufacturer of high quality digital cameras for industrial, medical, traffic and video surveillance applications. The company employs more than 350 people at its headquarters in Ahrensburg, Germany and subsidiaries in the United States and Asia.

Basler's portfolio of products offers customers the vision industry's widest selection of industrial and network cameras. Today it includes some 300 models - and it's still growing. We're committed to developing technology that drives business results for our customers: cameras that are easy to use, easy to integrate, and deliver an exceptional price/performance ratio.



©Basler AG, No. 01, 07/2013

Basler AG

Germany, Headquarters

Tel. +49 4102 463 500
Fax +49 4102 463 599
sales.europe@baslerweb.com
www.baslerweb.com



Edificio Antalia
Albasanz, 16
28037 MADRID
Tel. 91 567 97 00
Fax: 91 570 26 61

www.alavaingenieros.com

Torre Mapfre-Vila Olímpica
Marina, 16 - Planta 11-C2
08005 BARCELONA
Tel. 93 459 42 50
Fax: 93 459 42 62

alava@alava-ing.es

USA

Tel. +1 610 280 0171
Fax +1 610 280 7608
sales.usa@baslerweb.com

Singapore

Tel. +65 6425 0472
Fax +65 6425 0473
sales.asia@baslerweb.com

Korea

Tel. +82 707 1363 114
Fax +82 707 0162 705
sales.korea@baslerweb.com

BASLER
the power of sight