

'dop touch' AEROSOL PHOTOMETER for HEPA/ULPA/PTFE filter testing



INNOVATION

DOP SOLUTIONS' PHOTOMETERS have been testing manufactured and installed HEPA and ULPA filters around the world for 25 years, and our latest innovation, the 'dop touch' is the most advanced user interface available in the world today.

The 'dop touch' is packed with every feature you might need to test, record and print the results of your Filter Testing, **strengthening your compliance to ISO14644-3** and all other global cleanroom, containment system, and filter manufacturers Standards.

It is capable of testing all HEPA, ULPA and PTFE types of filter in-situ and as manufactured.

DOP SOLUTIONS



BENEFITS 'dop touch'™ FEATURES

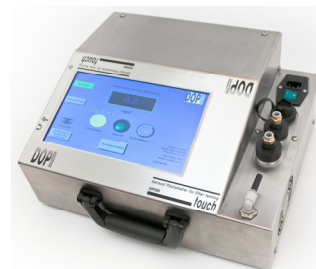
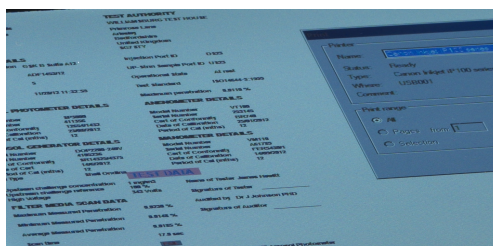
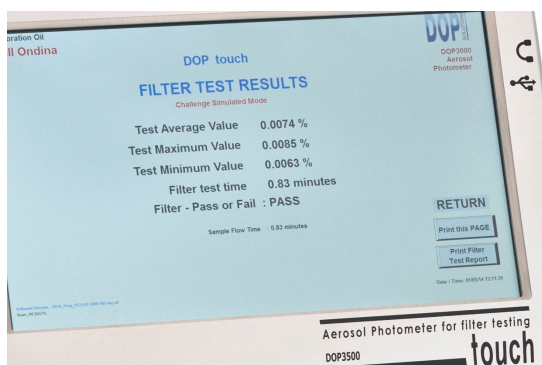
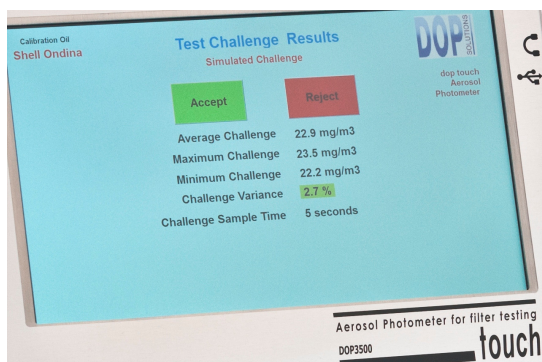
- Easy to operate using **touch screen interface**.
- Reversible use, flat or upright, screen autorotates.
- Fast and easy setup in seconds, **auto-calibrates to all globally used oil types**.
- Secure testing, calibration information recorded.
- Retains calibration when powered down and moving between filter tests.
- Light **Smartprobe**, audible and vibrating alarms, and sampling control.
- Comprehensive **test reports**, printed to paper (USB A4 or tally roll) or USB flashdrive.
- **Warranty -TWO years** for 'dop touch', one year for screen, and **LIFETIME** for **Smartprobe**.
- International Language reports available.
- Optical stability measures aerosol **concentrations as low as 1mg/m3**, and penetration to 0.0001%, so PTFE filters and ULPA grades easily tested.
- **Auto calibration** of aerosols from dropdown menu, includes for all common reagents/oil types.
- Reports min/max/average challenge concentration. On screen Accept/Reject feature.
- **3 alarms** - 'dop touch' Audio, Smartprobe LED and Vibrator means you won't miss leaks.
- **On-screen keyboard** for easy typing.
- Toxic sampling optical system as standard, so safe for all pharma,biotech and nuclear applications.
- **Stainless steel case**-robust and easily cleaned.

PRODUCT

**Touch Screen
Aerosol
Photometer**

MODEL NUMBER

DOP3500



DOP SOLUTIONS LTD
Unit 10 Protea Way
Pixmore Avenue
Letchworth
Hertfordshire
SG6 1JT
United Kingdom

Telephone:
+44 (0)1462 676446

Facsimile
+44 (0)1462 486078

**ALAVA
INGENIEROS**

Edificio Antalia
Albasanz, 16
28037 MADRID
Tel.91 567 97 00
Fax:91 570 26 61

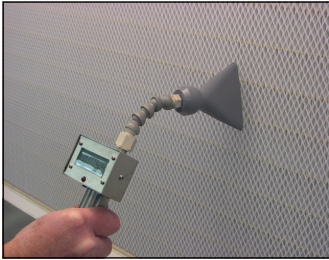
Torre Mapfre-Vila Olimpica
Marina,16 - Planta 11-C.2
08005 BARCELONA
Tel.93 459 42 50
Fax:93 459 42 62

www.alavaingenieros.com

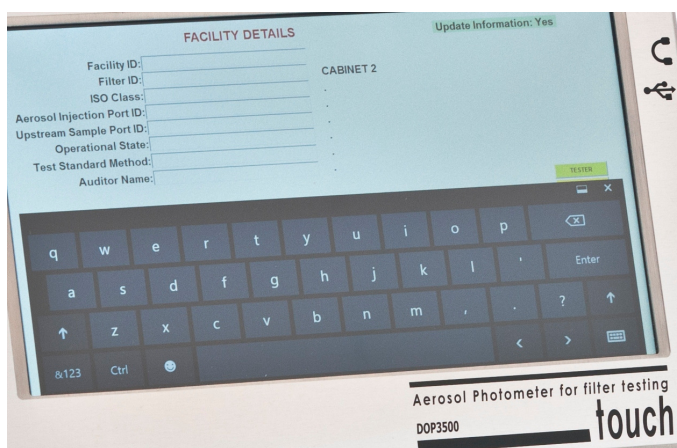
alava@alava-ing.es

Smartprobe™ DIGITAL FILTER SCANNING PROBE

Advanced scanning probe for 'dop touch' photometers - **articulating multi-directional scanning head** inserted into a stainless steel hand-grip with digital display, visual LED alarm and **handgrip Vibrator**, and 'dop touch' **sampling control** buttons. Probe and hand-grip/display can be separated for ergonomic scanning or hazardous sampling.



USER DEFINED INFORMATION



Test company, client, facility, and instrument details can all be entered using on-screen keyboard. This data appears in full A4 Test Report (if selected)

CALIBRATION

Calibration is made using the most advanced system available. Aerosols from 100 to 0.0001mg/m³ are generated and every instrument is tested through all 6 measuring decades. Certification is supplied to meet all current international filter testing legislation; BS, EN, ISO and IEST standards.



TRAINING in HEPA FILTER TESTING



ORDERING INFORMATION

1. Photometer only: DOP3500 or 'dop touch'
2. Smartprobe only: SP30-AV1 or Smartprobe
3. Case only: 999-052-ASSY or 'dop touch' Peli case
4. USB Printer Kit: DOP3000-PKS
5. Tally roll Printer Kit: 995-101-ASS
6. IQ/OQ protocol: 9000-500
7. HEPA filter testing course: PHOT-TRAIN3

TECHNICAL SPECIFICATIONS

Physical Size

33cm H x 38cm W x 17cm D (13" x 15" x 6.75") when upright

Weight

DOP touch - 10kg (22lbs). With probe and case - 17kg (38lbs)

Power

90-250V Universal, at 50 or 60 Hz. Automatically adjusts

Auto calibration

Self calibration and zero established at startup, fully automated
Pulse width modulated calibration lamp built-in

Alarm

DOP touch audio, Smartprobe LED, Vibrator and audio – individual

Sample flowrate

1 cfm (28 l/min) ±10% with Pulse width modulation pump control

Reagent settings

Ondina, PAO (Emery), DOP, DEHS,
PEG, Krydol, Mineral oil, Paraffin oil, Corn oil

Measuring Range

0.0001 to 120 mg/m³ Can be set higher for special applications.

Filter Challenge Range

1mg/m³ to 120mg/m³

Particle size range

0.05 to 1.0 micron particles detected and measured

Reporting

Real-time on screen graphing, datalogging, min/max/avg report, or full A4 Filter Test Certificate

Sends reports to printer, tally roll, or USB flashdrive

Printer

USB standard connection, optional serial port adaptor
Any USB printer, or DOP multi-part tally roll printer

Light Source

White light, for high optical sensitivity

Instrument Performance

Sensitivity: 0.000001 mg/m³

Accuracy: ≤5 % at each decade calibration point

Linearity: ±0.5%

Leak Detection capability

100% with scanning rates up to 5cm/sec

Operating Conditions

Temperature 5 - 50°C

Relative Humidity 15 - 80%

Standards Compliance

ISO14644-3, NSF49, IEST, CE, EN61010-1:2010

Warranty

2 years for Photometer, 1 year for screen

Lifetime for Smartprobe